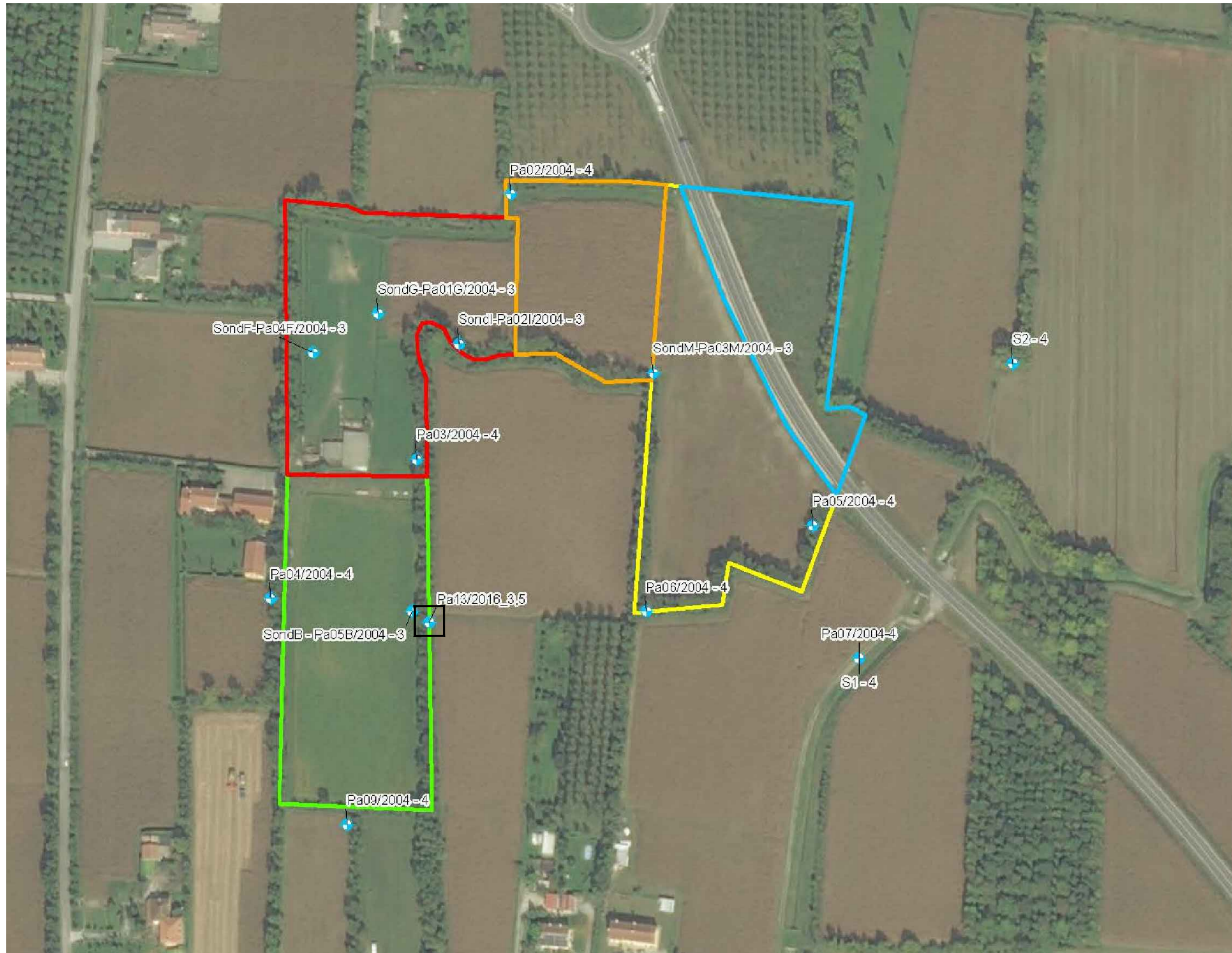
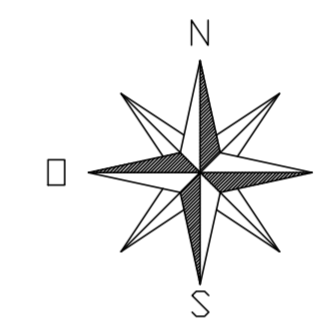
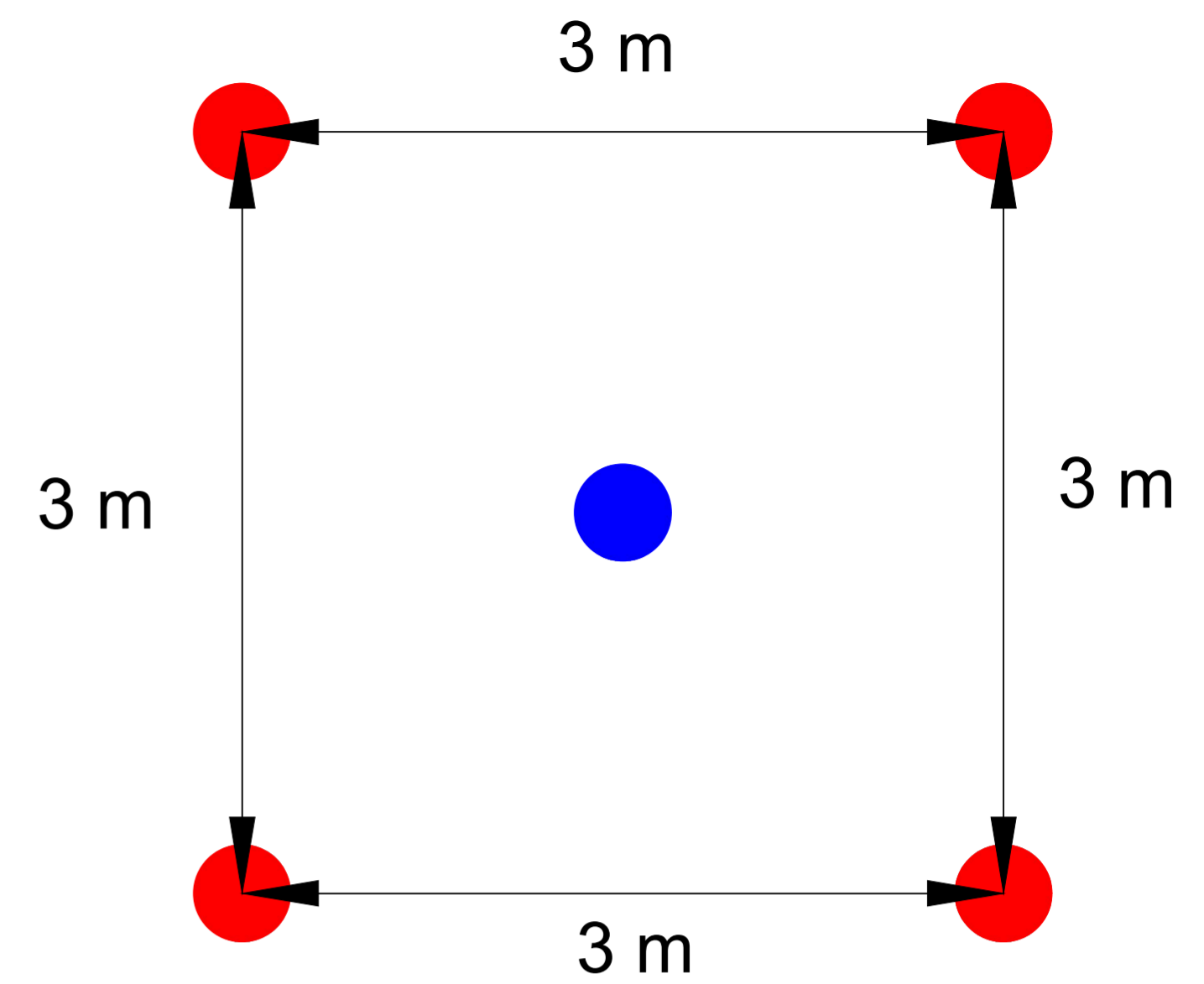
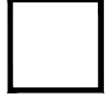




ACQUITARDO SUPERFICIALE - AREE DI INTERVENTO scala 1:2000

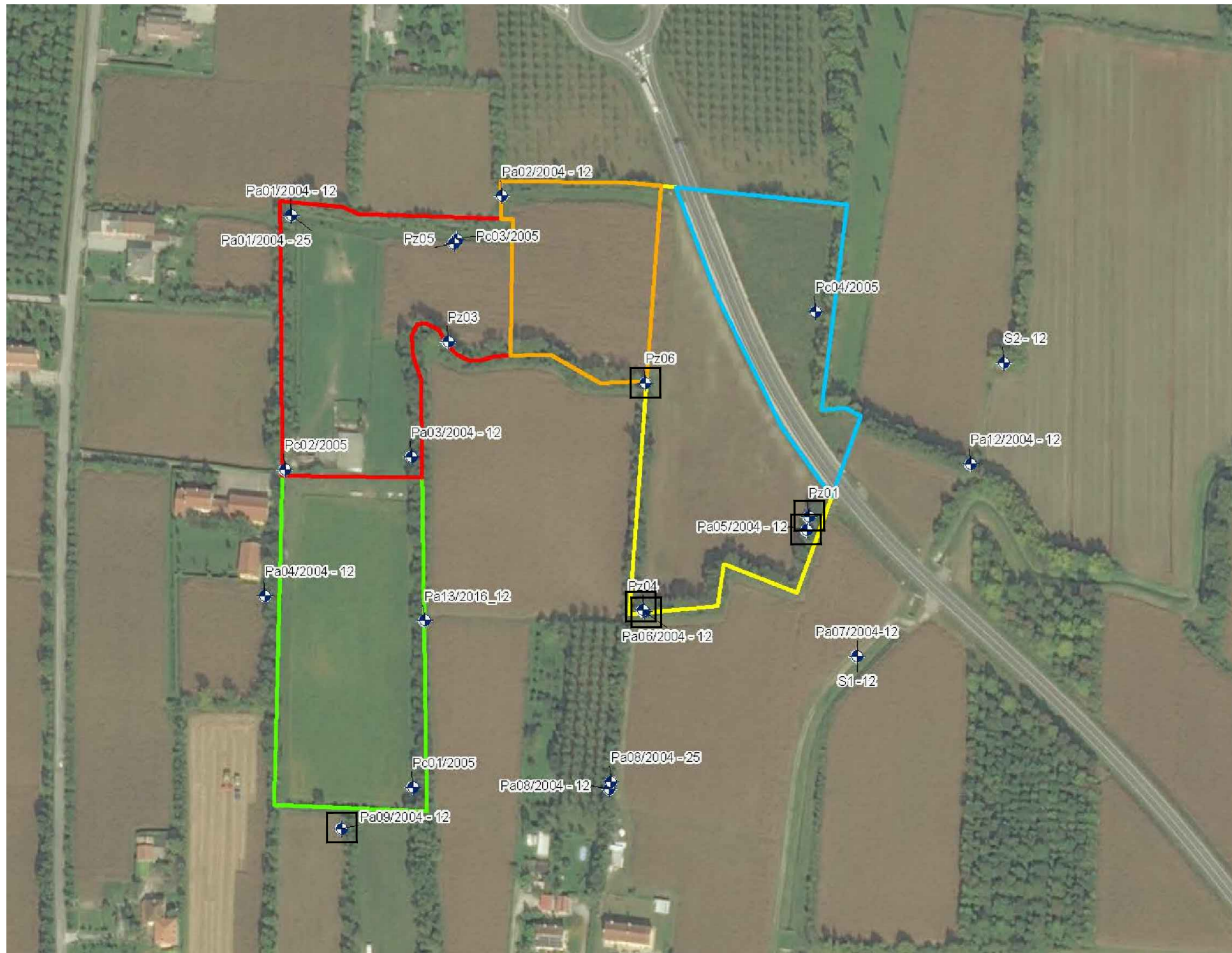


SCHEMA DI INTERVENTO scala 1:25



-  Area di intervento
-  Punto di iniezione
-  Punto di conformità

ACQUIFERO PRINCIPALE - AREE DI INTERVENTO scala 1:2000



Sant'Elena di Robegano  
Salzano (VE)

MISP E BONIFICA DELL'EX DISCARICA  
DI SANT'ELENA DI ROBEGANO  
IN COMUNE DI SALZANO (VE)

Progetto definitivo-esecutivo

OGGETTO		Interventi di bonifica	
ELABORATO	27	COMMITTENTE	
REVISIONE	1	PROGETTISTA	
COMMESSA	1660672/P0874Rev.1	PREPARATO DA	MZA
DATA	Luglio 2017	APPROVATO DA	ASC
SCALA	Varie	